

**NOXUDOL X9**

ANTICONDENSE COATING

(Suitable for Alu, Steel, Resin, Carbon fiber, Wood)

**NOXUDOL 3101**

SOUND DAMPING COATING

(Suitable for Alu, Steel, Resin, Carbon fiber, Wood)

**BONDAL / BONDEL ER**

Aluminum or Steel Sandwich Panels  
(standard, tailor made, coated, honeycomb)

**LIGHTBOND**

**BONDAL / BONDEL Coated**

Aluminum or Steel Sandwich Panels  
(standard, tailor made, coated, honeycomb)

**HEXANAVAL**

Aluminum or Steel Sandwich  
Damping SELFADHESIVE plates

**PHONKILLER M2C**

SOUND DAMPING PAST  
CONSTRAINED DAMPING PLATES

**PERFORATED SHEETS PLATES**

Perforated sheets to cover insulation material and  
to use as counter plates in anti-drumming paste.



**IMO – MED APPROVED**  
**Suitable for SUPER YACHTS**  
**Environmental Friendly / Recyclable**  
**Easy to Apply and Fast Application**  
**Cost Reduction**  
**Light Weight**  
**High Performance**



## NOXUDOL X9

### *Anticondense Coating*

- S.V: 70%
- Acrylic
- No Voc
- 0,58 Gr/M2 @ 1 Mm Dft
- 1,5 Mm Wft For Layer
- Up To 4 Mm Dry
- Anticondense
- Imo Med
- Overpaintable
- Colore Grey / Beige Light
- Can Reduce Noise
- 20 Liters Pails
- Airless application
- Suitable for all metals
- Hight Performance
- 0,07 W/mK





**NOXUDOL 3101**

**Sound Damping Coating Anticondese**

- Solid Volume: 70%
- Acrylics
- No Voc
- 1500 Mu WFT for Layer
- 1kg/M2 @ 1 Mm Dft
- Up To 4 Mm Thickness
- High Damping Value
- Imo
- Anticondese
- Color Beige
- Pails 20, 200, Liters
- Overpaintable
- Suitable for all material
- Airless application
- Light weight
- High Performance
- 0,08 W/mK





**BONDAL / BONDEL ALUMINIUM / STEEL**

**BONDAL / BONDEL ALUMINIUM  
BONDAL / BONDEL STEEL**

Finish sandwich panels

**Aluminium / Steel**

2000x1000 mm  
2500 x 2500 mm

**Thickness: ALU**

1,55 – 2,05 – 3,05  
Std: 2,8 kg/m<sup>2</sup> per mm sp.

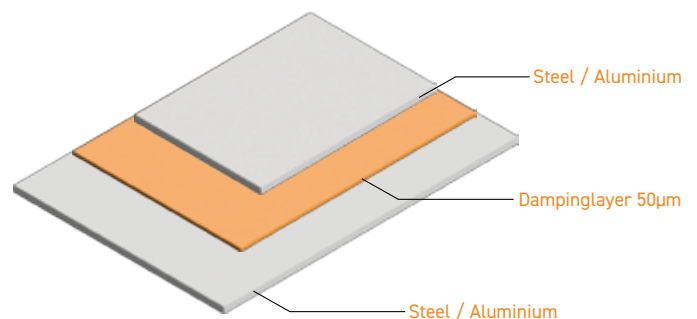
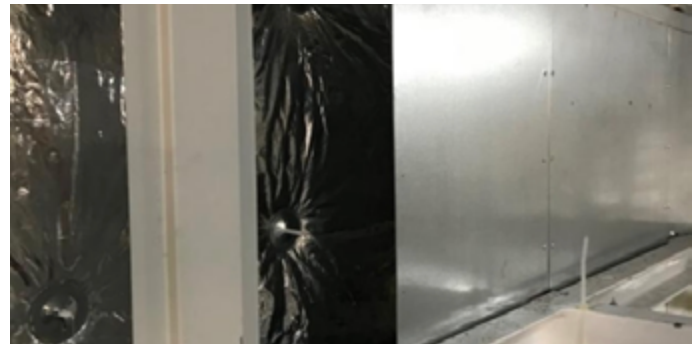
**Thickness: STEEL**

1,55 – 2,05  
Std: 7,8 kg/m<sup>2</sup> per mm sp.

**IMO MED**

Panels can be pre-coated with a polyester coating.  
Standard colors are RAL9003 and RAL9010.  
Both are coated in high gloss.

Correction can be made with polyester paint or after using a primer a polyurethane paint. Maximum temperature for the coating is 70 degrees Celsius.





## LIGHTBOND

Lightbond is our solution to combine weight reduction and quality cladding. Usage of Lightbond meets the need to create a higher quality level in an easy applicable, and an environmentally friendly method.

### WEIGHT REDUCTION

This precoated lightweight cladding material reduces the added weight of cladding systems up to 10 kg per Sqm compared.

### SMOOTH APPLICATION

The high stiffness of the materials offers the possibility to use rivets without denting the sheet. This give you a nice and high-quality surface.

### QUICK and EASY

Applying Bondal Aluminium, as a precoated cladding part of the ship, reduces the amount of painting labor and drying time substantially, which are required by using regular steel or aluminium surfaces. Application can be done with rivets or just glue the sheets against the framework.

### COATING

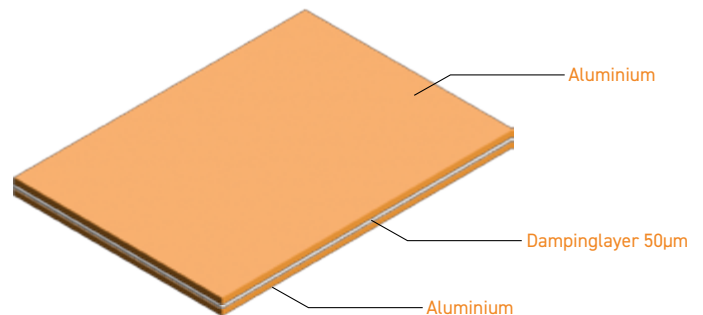
Bondal Aluminium is pre coated with a polyester paint. Standard color are RAL 9003 and RAL 9010. Both are coated in high gloss. Correction can be made with polyester paint or, after using a primer, a polyurethan paint. Maximum temperature for the coating is 70 degrees Celsius.

## TECHNICAL DATA

<b>Material:</b>	EN AW 5754 H111. PE core
<b>Dimension:</b>	2.000 x 1.250 mm. 2.500 x 1.250 mm. Other dimensions on request.
<b>Thickness Bondal:</b>	Standard 2,0 mm. Other thicknesses on request.
<b>Coating:</b>	45 µm polyester coating in 9003 and 9010.
<b>Environment:</b>	Fully recyclable.
<b>Test results:</b>	Full test results are available on request.
<b>Weight:</b>	2,8 kg/m <sup>2</sup> per mm thickness.

## APPLICATIONS

- Ceilings • Walls • Air Ducts • Enclosures • and many more.





## BONDAL / BONDEL ER

Bondal ER Panel is an aluminum sandwich panel. Due to the aluminum honeycomb core an extraordinary stability can be combined with a very low weight. The added thin anti drumming layer guarantees the high damping.

It is easily possible to use large dimension panels. The rigid it of panel also makes it easy to work with a low number of support frames behind the panel. A support distance of 1.250 mm is possible.

**Size:**

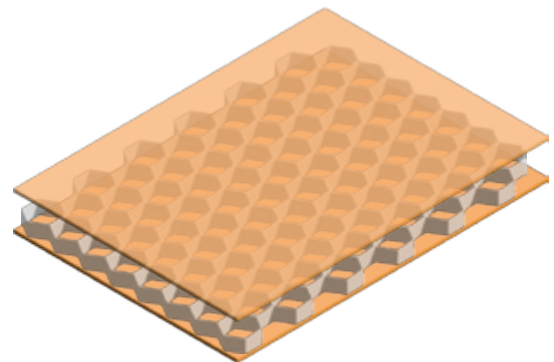
3000x 1250 mm MAX

**Thickness:**

Max to 40 mm

**Weight:**

6,1 kg/m<sup>2</sup> @ 7 mm thickness





**HEXANAVAL ALUMINIUM / STEEL**

**HEXANAVAL ALUMINIUM**  
**HEXANAVAL STEEL**  
SANDWICH PANELS SELF ADHESIVE.

LOW FREQUENCY

**Aluminum / Steel**

290 x 240 mm

290 x 195 mm

**Thickness: TOP ALU**

0,5 mm – 4 kgs/m<sup>2</sup>

1,00 mm – 5kg/m<sup>2</sup>

1,5 mm – 5,9kg/m<sup>2</sup>

2,00 – 6,8 mm/m<sup>2</sup>

**Thickness: STEEL**

0,5 mm – 6 kg/m<sup>2</sup>

0,75 mm – 7,4 kgs/m<sup>2</sup>

1,00 mm – 8,8 kg/m<sup>2</sup>

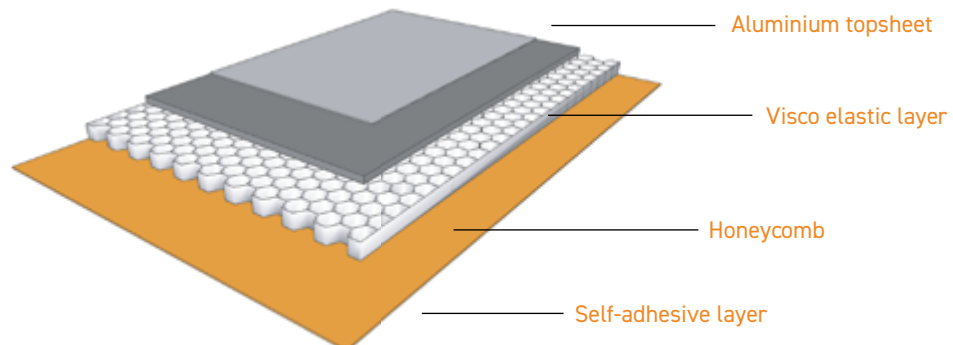
1,5 mm – 11,7 kg/m<sup>2</sup>

2,00 – 14,4 mm/m<sup>2</sup>

**Packaging:**

100 pcs

**IMO MED**

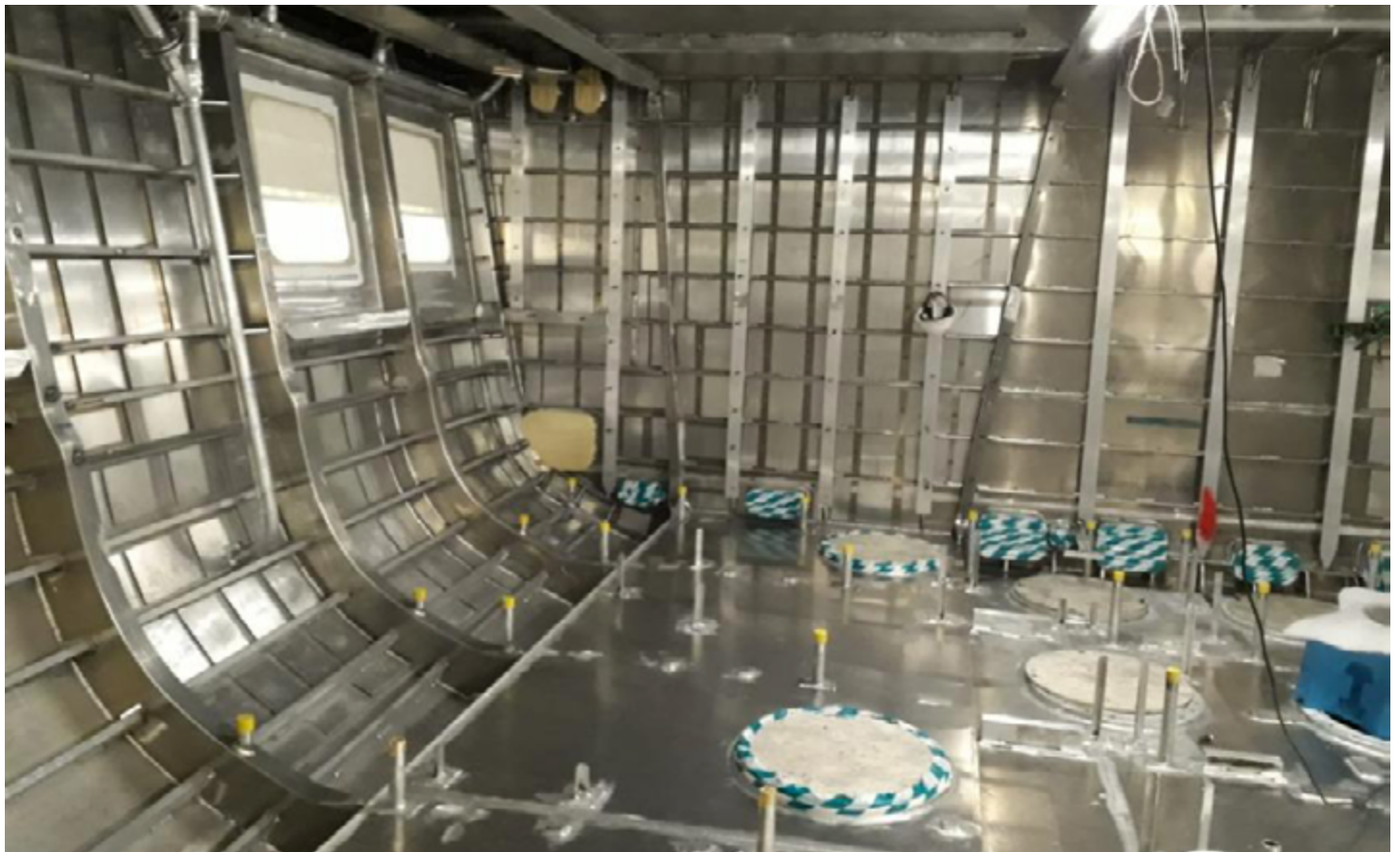




## PHONKILLER M2C

### *Viscoelastic damping past for constrain layer*

- S.V: 100%
- Ps: 1,4 Kg/M2 @ 1 Mm
- Elastomeric
- Min. Voc
- High Acoustics Performance
- Imo Med
- Overpaintable
- Floors, Ceilings, Verticals Walls,
- Dark Grey
- 20 Liters / 30 Kgs





## PERFORATED SHEETS

This lightweight damped cladding material reduces the total added weight of the structure born noise damping system with approx. 100%.

When perforated plates are used as anti-drumming material, the damping results will be the same as by using fully closed metals. The big advance of using perforated materials is the lower change of enclosed air bubbles and a reduction of weight.

Using perforated sheets to cover mineral wool, the absorption grade of the wool will be more effective. This is because of the so-called Helmholtz principle.

Perforated sheets can be used as a decorative design for architects. The wide range of hole sizes, shapes and pitch sizes creates and endless possibilities for designing your surface.

### Dimension:

2000 x 1000 mm

2500 x 2500 mm

### Thickness:

1,0 – 1,5 – 2,0 mm

### Perforation:

R5/T5

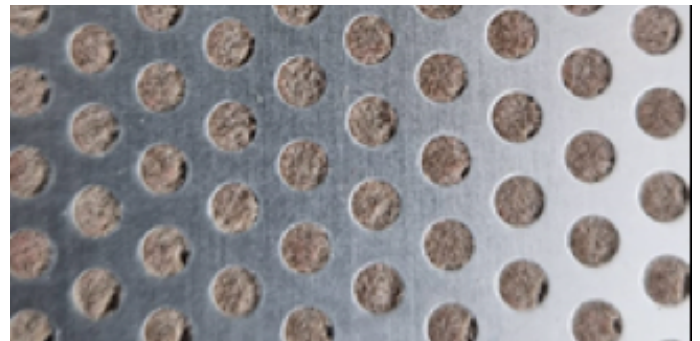
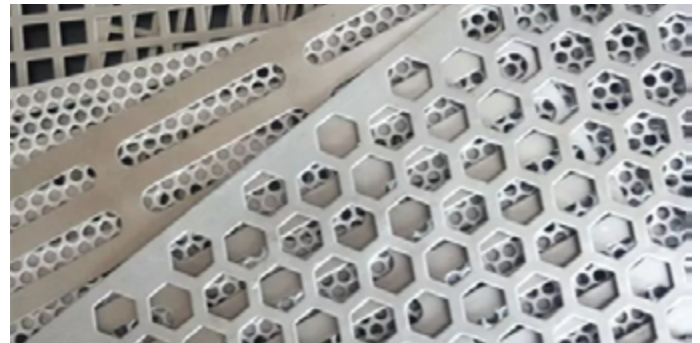
C3/U10

On demand

Powder / Pu Coated

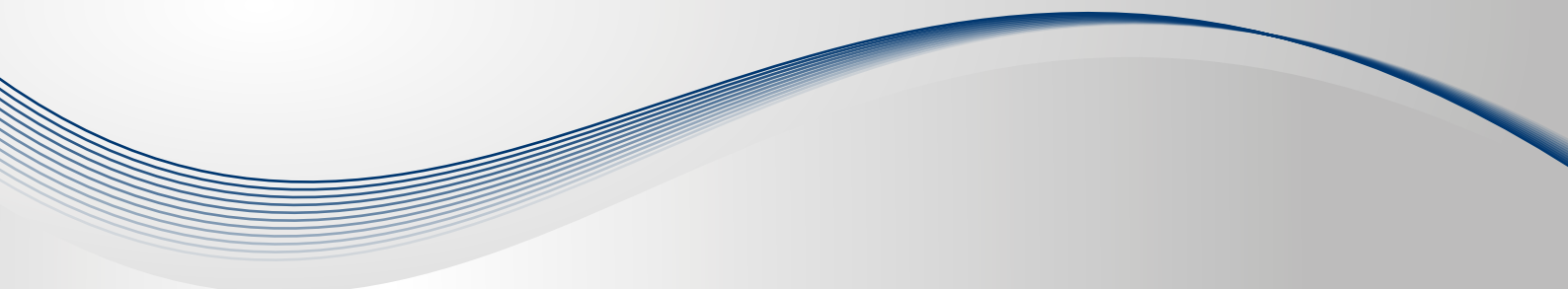
### Outskirt:

On length closed on width open or closed.









**Mcoating International**  
Laagraven 5D - Nieuwegein - The Netherlands  
W.A: +31620310620 - info@mcoating.net - noxudol.nl - mcoating.it - mcoating.net

